

Breath of fresh air

Nick Bowkett

We all know how important it is to maintain ventilation in livestock buildings to reduce the risk of respiratory diseases. However simply increasing air flow into a building can cause wind chill which increases the risk of immune suppression and is associated with reduced growth rate as animals utilise feed to maintain body temperature rather than growth.

Secure Windbreaks have been designed to keep out wind, rain and snow but let in ventilation and light. They are a cost effective alternative to traditional Yorkshire boarding for weather proofing sheds. They can also be used above exposed gates to reduce draughts whilst still providing ventilation.

Have a look online for more information on Secure windbreaks.

www.securecovers.co.uk



Secure Windbreaks are tough and non-fray, versatile, easy to install and come with a full money back 10 year UV stability guarantee. They are available in a range of sizes. So if you want to improve a poorly ventilated building or reduce the draughts in an exposed one give me a call on 01765 689666.



For Sale & Wanted

Angus pedigree bull DNA tested 30 months old. 07971 776671.

Molasses tank wanted 10t plus call Jim on 07968 214036.

Herdsperson required for dairy farm. Hartlepool area. 0779 5083887.

Wanted Full / Part time farm worker 01765 635318

Quadrant baled horse haylage £25/ bale collected. Northallerton area 01325 378228.

Angus bulls for sale or hire. Peter Turnbull 01347 868236 or 07836 370253.

Hay for sale. Good quality. Small bales and also large oblong. Also, large haylage bales. Reasonably priced. 01423 864253.

Traditional small bales of meadow seed hay and wheat & barley straw. Small and large orders. Edge of Ripon 01765 602818.

Keenan feeder wagon 160 with knives & weigh. 2008 model in good working order. Scarborough area. 07971 776671.

Contractors / Services

Grassland subsoiling, aerating, ploughing, reseeding & overseeding. Harrogate / Ripon area. Steven Brown 07920 884575.

Self-propelled forage harvesting. Round and quadrant baling and wrapping. Tractor and man hire 07759 342125.

Primrose Tyre Services, Bedale. Tel. 01677 450487 or 07977 732096.

Agricultural Electrician, J R Graham. Fault finding and repairs, breakdowns, new installations, lighting, security, 3-phase. Tel John on 07595 620935 or 01423 340319.

Fencing Contractors, A and S Corner, Easingwold. Call Andrew for a competitive quote: 01347 823645.

Cattle freeze-branding, North Yorkshire. Tel Steve Johnson 07940 064991 or 01347 810980.

Fencing Contractors David Robinson. Leyburn 07762 317201.

Agri Pest management. Agricultural pest control – rats, mice, moles, rabbits & insects. Tel. Nick 07716 467460 or 01765 640 867.

Slitting and over-seeding in one pass. Sward lifting, slurry tanking, ploughing, man & tractor and concrete grooving. Fodder beet cleaner-loader with picking off table for hire.

Tel. Mike 01765 689 039.

Rhodes Feed Services for on-farm rolling, grinding, mill & mix services. All areas covered. 01759 318230 or 07811 432127.

All types of fencing work. 3 tonne Digger hire. Ditching, lane repairs etc. Simon Poulter 07751 553504.

5t digger for hire, with or without operator. Andrew Donaldson 07753 637638.

Fencing, Forestry and Groundworks Contractor. WM Rural Contractors, Yorkshire. Contact Will McDermott 07791335602 for a competitive quote.

Welding tuition available in MMA mig & tig processes on pipe and plate. Call 01609 761697 email: fortressfabrications@outlook.com

ANIMAL FEEDS • FERTILISERS • SEEDS • COUNTRY STORE

Focused on Farming



JANUARY 2016 ISSUE

Best sellers

Dr Ruth Lawson

The pace of change of what abattoirs require seems to be fast and furious. So farmers selling cattle into the store ring need to question whether they are putting animals forward that the finishers want – if you're not the penalties will be increasingly steep.

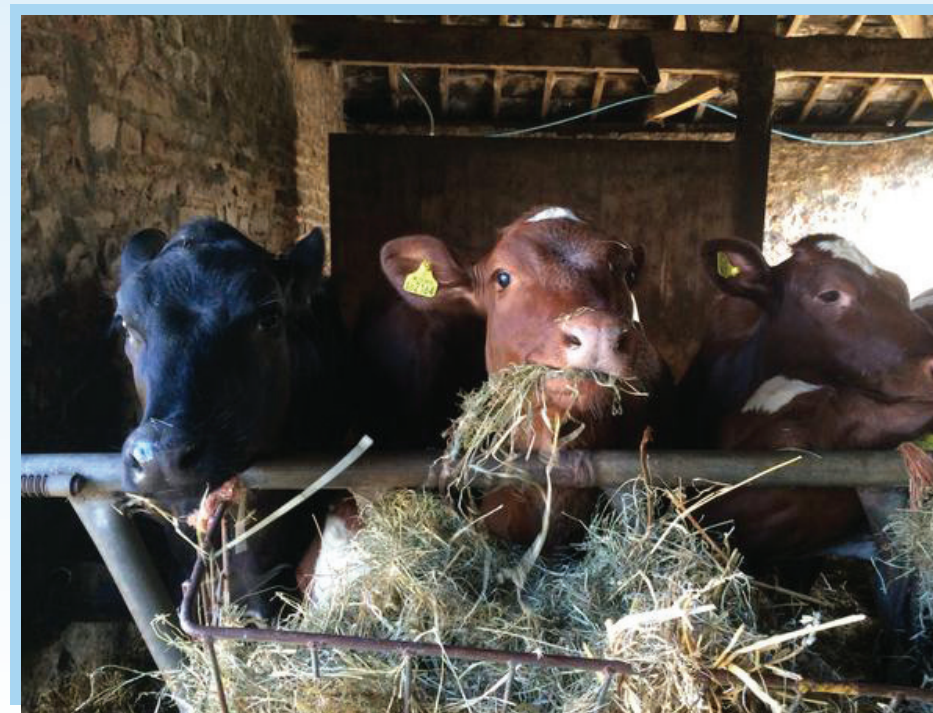
Recent changes to specifications mean finisher buyers are looking for animals to meet a relatively narrow set of parameters. It is clear when cattle come through the store ring that those not destined to achieve specification are coming to less money.

Cattle over 30 months of age will be heavily penalised, so think about whether your cattle will get finished in time. Usually looking at a 3 month window to finish cattle if they are well grown. Bulls need to be finished under 16 months or a penalty is applied. This really means that bulls need to be on ad lib from day one to meet this criteria.

Take care not to get cattle too big as carcass weights over 415kg are penalised. Also, feed conversion efficiency is higher at lower weights so it makes sense not to get animals too big.

The new "four residencies rule" is also something to consider. Movements through markets and abattoirs don't count, but take care not to leave your buyers being the fifth home.

Please get in contact on 01765 689666 if you'd like your store cattle diets formulated to achieve these specifications.



Monthly offers

Hardware

Sheep Hurdles:

4' Wooden £6.50 + vat

5' Wooden £7.40 + vat

6' Wooden £7.75 + vat

4' Interlocking metal £14.50 + vat

6' interlocking metal £14.75 + vat

8' interlocking metal £22.95 + vat

Dickies Navy Cambridge Jacket
Now £26 + VAT

Mole traps Buy 4 get a 5th free

Pro mark marker spray buy 5 get a 6th free



Animal health



Closamectin Pour-on

2.5L save £20 & get a free applicator worth £25

1L save £7 & get a free applicator worth £25

Country store

10% discount for entire range of Bruder toys

Save 10% on Hug Rug (size 65 x 85 only)

Free bag of Spillers Glucosamine or Biotin Treats with any purchase of Spillers Horse and Pony cubes, Cool mix and Conditioning cubes (one bag per purchase).

All Ex Masham While stocks last!

Please mention the newsletter when ordering.



W E Jameson & Son Ltd, Foxholme Lane Mill, Masham, N Yorkshire HG4 4EL

Tel: 01765 689666 • Fax: 01765 689662 • www.wejameson.co.uk



Out in all weathers

Take a look at this fantastic portrait of Jameson customer Margaret Sayer from West End. The photograph was taken by Casey Orr whilst Margaret was feeding her sheep. It really captures the working life of a hill top farm in North Yorkshire on a brisk, windy day. If you would like to see this photo and others like it, or any of Casey Orr's other incredible works, visit Leeds Library. Casey's work will be on show until the 9th January 2016, and it's free.



AROUND THE MARKETS

At Otley auction, the top price ewes at £160 were presented by TH, K & TM Wood, High Birstwith. Top price store heifer at £1075 was from John & Lisa Smith, Menston. Both customers use primestock pencils.

At Leyburn auction, customers were successful in the calf show. Top price black & white bull at £310 came from Pearsons, Caldbergh and second price was from F&S Iveson.

At the Christmas show at Thirsk auction, the Avisons from Leyburn achieved first place in the cereal fed bull class selling for 190ppk, they use IMMU-Surge calf milk powder, calf and beef blend.

Yet again the Bowe family produced the goods at Northallerton auction with top price steers at 244ppk and

248ppk. Also, top price black & white bulls at 177ppk came from CH Duffus using cattle pro 60.

At the Darlington Christmas show, champion pen of lambs were a pen of texels from the Beveridge family, Low West House realising £120. Taking a ribbon in the Holstein/ Friesian bull class was the Halls from Kilton Hall, realising £1071 and feeding cattle pro gold. The Marks family from Gilly Flatts were victorious in the other breed steer classes with prize winners achieving £1257, £1251 & £1433. In the lambs sired by a continental ram class, Ivanhoe livestock took first place at 198ppk and 188ppk, using maize 'o' mix.

At Skipton auction, Church Farm Enterprises took the reserve calf champion using IMMU-Power calf milk.

How to avoid a 'P'

One of the troubles with farming black and white bulls is the proportion of 'P' grades you get which attract heavy price penalties compared with 'O' grades.

In an EBLEX study, calf mortality during the rearing phase tended to be greater in the 'P' group calves compared with 'O' group. Both weight and conformation are likely to reflect early management of the calf, so a good start in life is vital to combat the P's.

Getting it done Jonathan Stansfield

If grassland performance hasn't been so good one of the most common problems is soil acidity. CalciPrill lime is a convenient way to correct soil pH. There's no need to order full wagon loads, calciPrill is available in convenient 600kg bags. The granulated pellets are made up of fine particles which when dissolved, give a quick response from the grass crop. Application rates are much lower than traditional lime although a further application may be required sooner than if a large amount of lime was spread.

Ring me on 01765 689666 to discuss your requirements.

TOP OF THE TRADE

Jake Lakin

J.H. Throup of Lower House Farm, Silsden, has recently achieved top price at Craven Cattle Marts with his mule weather lambs. He regularly achieves top price or runner up! Jack uses Jameson's Hogg Blend and Intensive Lamb Creep, mixed at 50:50 and fed to all growing lambs and feels this is key to his lambs achieving a high growth rate. This creates a diet of 17% protein allowing good frame development whilst the high energy level allows the animals to gain weight and thrive. Prior to sale, Jack incorporates Jameson Primestock Pencils into the ration. This product

contains good levels of starchy ingredients allowing the animals to lay weight down nicely, resulting in a quick finishing phase. The diet is coarse in consistency, allowing a slow rate of degradation within the rumen, reducing rumen acid production. The farmer feels this is key to the lamb fattening process as he experienced very few cases of 'skittery' lambs.

Primestock Pencils are also fed to store cattle at Lower House Farm. This allows economic growth and good bloom, key for when the animals enter the store ring at market.

Maize varieties

David Lewis

2015 was not a good year for forage maize. The low temperatures throughout summer led to slow growth and a delayed harvest led to problems getting the crop off the field.

The importance of having a variety that ripens has never been greater. However, despite the weather problems we have seen some good silages that are feeding well. So which variety will do best in our region?

Activate – as seen in previous years this is a very early variety and has consistently produced good quality silage. It may not yield as high as other varieties but it will mature earlier and give good animal performance.

Reason – new to us in 2015, this is an early maturing high yielding variety. It has grown well and produced good cobs. Although not on the NIAB list until 2017, it is expected to be in the very early category. Best results were seen on good maize growing land where it matured before Ambition.

Yukon – this variety performed as well as any in 2015. It gave good yields over a wide range of sites and dried down well to give good quality silage. It fits in to the role taken by Destiny over many years.

Ambition – again, this was Britain's most popular variety. On good maize growing land it has produced big crops with large cobs. It will mature later than the cobs listed above but is still a very good variety in the correct situation.

Crescendo – this variety has been around for many years and is still available in limited amounts. Farmers who grow it like the yield and reliability of performance over different seasons. Also, the seed price is lower than all the other varieties.

Please give me a ring on 01765 689666 to discuss maize varieties.

10 things you might not know about liver fluke in cattle

Kathryn Henry

1. Even a low grade infection has been shown to reduce milk yield by 400 litres per cow per lactation.
2. Fluke can also have detrimental effect on butter fat with untreated animals producing 10% less milk solids.
3. Calf birth weights for fluke infected cows can be 10% lower and young stock will experience poor growth rates.
4. Meat hygiene service records show 20% of all cattle slaughtered in the first quarter of 2010 had their livers condemned due to fluke.
5. A moderate infection of 100-200 fluke can lead to blood loss of up to half a litre each week.
6. A study showed that age to first oestrus was delayed by 39 days in infected animals.
7. Typical costs of an infection are £20 per head.
8. Liver fluke are not host specific – it's exactly the same fluke that affects all grazing animals.
9. Each adult fluke can be up to 3cm long.
10. Adult liver fluke can survive in cattle for 6 months to 2 years

To discuss liver fluke in cattle and how to treat it call into the trade desk or give me a ring on 01765 689666.



USEFUL NUMBERS Country Store 01765 680215 • Nick Bowkett 07715 994178 (Product Sales) • David Lewis 07710 600848 (Dairy Specialist) • Jake Lakin (sales) 07740 409826 • Stuart Holmes 07894 595194 (Sales) • Graham Jameson 07802 253060 (Sales) • Jonathan Stansfield 07732 396078 (Grain Buyer/Fertiliser Sales) • Richard Harker 07732 396079 (Accounts) • Peter Harland 07803 116410 (Sales) • Ruth Lawson 07725 263050 (Nutritionist) • Andrew Bailey (sales) 07803 515587