

ANIMAL FEEDS • FERTILISERS • SEEDS • COUNTRY STORE

Focused on Farming



Finishing cattle

STUART HOLMES

NOVEMBER 2012 ISSUE

Rapid live weight gain and optimum finish requires feeding high starch, cereal based feeds. High starch levels are especially important in large framed, difficult to finish animals. Adequate quantities of structural fibre (0.5 – 1.5 kg of straw per head per day) are essential to ensure maximal intake and make sure cattle stay sound. This needs to be supplied in a ring feeder as cattle will not eat what they lie on (even if it looks clean to you).

Bulls around 200 kg can move from the rearing ration straight to the finishing one, but it's helpful to make the ration more palatable in the last 60 – 80 days to give intake a boost. Also black & white bulls tend to respond to lower crude protein rations as high protein tends to make them grow tall and lean, making them hard to finish.

Although forage based systems can be cost effective for finishing cattle, this is dependent on using high quality silages. This could prove a challenge

this year! Make sure you have your silage analysed to see what it's like and feed accordingly. Large quantities of grass silage in bull beef diets will reduce energy density and extend days to finish. Reliance on poor quality forage will reduce live weight gain substantially. Unless high quality forages can be fed, fast finishing cereal based systems will get cattle off the farm quickly and efficiently.



Mule sale at Northallerton

STUART HOLMES

A cracking show of sheep in all departments with a ring full of buyers attended the Jameson sponsored mule sale at Northallerton.

Buyers were all looking to secure quality sheep, with mule shearlings the trade of the day averaging a very creditable £160.87 from I McClanachan. Strong well-bred continental ewes also traded well averaging £139.78.

The first prize mule shearling at £200 came from Margaret Watkinson and sold to Ian Pattison. The winning vendor is pictured with Judge Howard Kitchin and Jameson rep Stuart Holmes.



Fantastic calves

DR RUTH LAWSON

At the end of September, Jamesons sponsored the highest prize black & white bull calf at the annual show of calves at Otley market.



One of Jamesons customers, George Barrett from Leathley won the prize with a super black & white bull. The winning bid came from show judge for the day, Keith Leighton from Barmby on the Marsh at £235.

Interestingly, on the same day a batch of black & white steers achieved over £1000 a head.

Monthly Offer

Dalesman Feet & Fertility buckets
Buy 10 get another bucket FREE



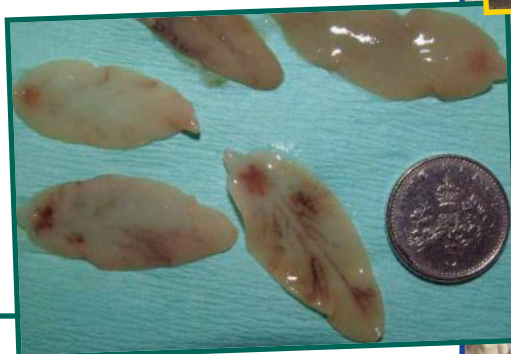
It's a fluke! CATHERINE LAWSON

You don't need me to tell you it's been very wet for the past three months. According to NADIS, we've experienced 60 to 90 % more rainfall than the average year. Overall, it has been the wettest summer for 100 years. The implications of this are that the liver fluke forecast is very high this season. There will be many farms that will get liver fluke this year that have never had it before. Signs include rapid weight loss which is easy to spot in cattle, but not so easy in sheep. The classic sign in sheep is bottle jar, as shown in the photo.

Farms with a known liver fluke problem should have treated both sheep and cattle by now. Farms with no previous evidence of fluke should monitor for the presence of infection and post mortem all sudden deaths.

Cattle which have been exposed to liver fluke infection at grass should be dosed at housing. A study conducted in the UK and Ireland in 2010, indicated that the majority of fluke infection in cattle from September to December were late immature/adult stage, which allows for a wider choice of flukicides at this time without the need to delay treatment.

Ask at the Jamesons trade counter for advice.



Hogg Blend – a legend in the feeding of finishing lambs GRAHAM JAMESON

Jamesons Hogg Blend has remained relatively unchanged for 15 years. The specification designed by Malcolm Jameson had two basic principles; a blend of highly palatable ingredients to maximise intakes, high in digestible fibre to allow very rapid and safe introduction, yet starchy enough to finish them quickly.

Typically fattening store lambs on 'hard' feed is a high throughput, short duration system. Lambs need to be introduced very rapidly to the feed so minimising any delays in fattening. Jamesons Hogg Blend is almost legendary in the area for fulfilling these specific criteria. The carefully blended combination of Molassed Sugarbeet Pellets, Barley Distillers, Rolled Barley, Wheatfeed, Soyabean meal and Rape meal fortified with vitamins, minerals and trace elements, and coated in Molasses are the key ingredients of success. Lambs

rapidly maximise intakes, achieving daily intakes of 1.5 to 1.8kg. At these intakes lightening finishing is guaranteed as long as lambs are healthy and have a source of forage. Quality ingredients always cost that bit more but Jamesons resist the temptation to cheapen the ration, knowing that hundreds of customers have come to rely on the safe, efficient finishing of lambs on Hogg Blend. Ask your representative for a specification and price.



- A course blend of rolled cereals and 6mm pellets.
- 17% crude protein and high metabolizable energy (13 MJ/kg DM) means maximum performance.
- Feed to stored lambs *ad-lib* in hoppers or troughs for rapid finishing. Rapid introduction achieved safely.
- High starch (cereals wheat and barley) compliments grass protein giving optimal rumen function and finishing.
- Contains ammonium chloride to aid in the prevention of urinary calculi (stones).

USEFUL NUMBERS Nick Bowkett 07715 994178 (Product Sales) • David Lewis 07710 600848 (Dairy Specialist) • Jonathan Stansfield 07732 396078 (Grain Buyer / Fertiliser Sales) • Richard Harker 07732 396079 (Accounts) • Nigel R

New calf milk replacer

DR RUTH LAWSON

This month we launch our newly designed top-end whey and skim based calf milk replacer. Both are 23% protein and 17% oil. We have chosen to only use ingredients that calves can digest well and that don't cause any irritations to their guts. This will make sure you get your money's worth for every gram of powder you buy. Also, the powder won't cause any digestive upsets for your calves.

In addition, we have packed it full of lots of goodies which have been scientifically proven to help their immune systems, improve digestion and increase palatability. We have also included IMMU-Gain which contains immunoglobulins for Rotavirus, E. coli, Salmonella, Coronavirus and Cryptosporidia. We aim to give your calves as much protection against disease as we possibly can.

Ask your rep for a quote for Jameson IMMU-Power (whey-based) or Jameson IMMU-Surge (skim-based).



Bringing cattle indoors can be a stressful time for both you and the cattle. Pneumonia is an ever present danger, but risk of infection can be minimized through careful management. Adopting a more strategic approach to worm and fluke treatment can limit intestinal damage which often governs feed conversion efficiency. Adjustments to building design can also promote cow welfare. A smooth transition between grazing and winter rations will ensure cattle aren't checked by nutrition.

When cattle are grazing, their rumen contains bugs designed to break down fibre, but when the diet changes, the bug population needs to change to ones that can break down concentrates that are higher in starch. You should allow a minimum two-week changeover period between diets to avoid rumen

upset. Suckled calves often have a double stress of weaning at housing. As well as reducing the risk of a post-weaning check, creep feeding also helps guard against pneumonia as it reduces stress. Jameson Changeover pencils can work well at this time.

Long clean straw should also be supplied to appetite. Don't rely on bedding straw - this soon gets fouled and stock won't touch it. Cattle won't eat much - possibly only 10-15% of the dry matter in the diet - but it will get them chewing which produces saliva and helps neutralise acid in the rumen.

And finally, don't forget that while all diets should be supplemented with vitamins and minerals, it is absolutely essential to use a calcium-rich supplement in an intensive grain diet to keep bones strong and healthy.

Protected rapeseed meal

DAVID LEWIS

Ruminants take protein from both the microbial protein synthesized in the rumen and dietary protein that escapes rumen degradation. To achieve maximum productivity, a combination of rumen degradable and bypass protein should be fed, especially for high production animals. In such situations, microbial protein production is often insufficient to meet animal requirements. Rapeseed meal although full of protein, doesn't have much bypass protein. Feeding rapeseed meal alone to high yielding cattle is unlikely to meet their requirements. However, chemical treatment of rapeseed meal can increase the amount of protein available post-rotationally. By replacing even a modest 5% soya in your blend with protected rape, savings of £7.50 per tonne could be made. Ask your Jameson rep about our protected rapeseed meal.

Hard to finish...

GRAHAM JAMESON

After the dreadful summer we've just had, there is a very wide range in the quality of the wheats being offered for livestock feeding. Many are of low bushel weight and well below the minimum industry standard of 72 kg/hl. Between 72 and 65 kg/hl wheats have marginally lower average values for starch and energy. The very low bushel weight wheats (<65 kg/hl) have a considerably lower starch content. As bushel weight declines, so does metabolizable energy (ME) level. What this means in practice is that energy density of rations will be lower if they contain low bushel weight cereals. Animals will tend not to do as well and finishing stock will take longer. Fortunately, at Jamesons, we've calculated our average bushel weight at over 70 kg/hl. In such a bad year we're delighted at this result (other firms may not have been so lucky). Also, with small grains being frequently seen in low quality wheats this year, cattle will pass many undigested grains with the resultant effect of lost nutrient value. Care must be taken with on-farm processing, either grinding, acid treatment or caustic treatment will be essential this year.

Jamesons launch new website

Our new website is now up and running, have a look at: www.wejameson.co.uk

Our farming issues section contains information for dairy, beef and sheep farmers, as well as those rearing youngstock. You can also see the services we provide to support your business.

There are also details about fertilizers and cereal seed. Under the soils and crops heading, you'll find our grass seed mixtures described, along with

maize seed, fodder crops and game cover mixtures.

The "about us" section of the site will give you an insight into the team at Jamesons and also tell you about our history.

The section on animal feed can be used as a reference for farmers wanting to find out about all our products.

As you know we supply compounds and blends for dairy, beef and sheep farmers. But we also design keymixes to match your forages and the feeds available on your farm. We also supply a range of straights, including soya, rapeseed meal and dark distillers grains. Plus products such as fodder beet brewers' grains and pot ale syrup.

Dear Dr Ruth...

Dear Dr Ruth,

I'm writing because I'm fed up of hearing those pesky teenagers coughing and spluttering, not to mention the babies blowing and generally looking peaky.

Since the heifers came indoors, they've been sickly. The calves had been bouncing around all summer,

but lately they look depressed and even worse I've noticed the knacker visit a few times. All these sickly mooks are getting right on my nerves, any ideas?

Yours a frustrated Mook210

Dear Mook210,

Thank you as always for letting us know your frustrations. Without even thinking about deaths and paying Jon the vet's bill, pneumonia has a long-term impact on the lives of these youngsters. Young ones that have been coughing and spluttering won't grow so quickly, will give birth later and produce less milk.

His Lordship has done lots of things to help stop pneumonia, but he needs to switch the calves onto a good quality milk powder even the cats turn up their noses up at the one he's using. Of course calf weaner pellets from Jamesons will help them build healthy immune systems that can fight bugs. Also, I noticed the heifers have been brought into the building next to the calves. This isn't ideal as they'll pass bugs between each other like kids in a nursery. Also, I noticed that

the calves were vaccinated just before they were moved into the group pens. I don't think the calves were given enough time to build up their immune systems.

You might have noticed, whenever you mooks get stressed a bout of pneumonia follows. Do you remember when Ralph the relief "looked after you all" when His Lordship was sunning himself? All the calves were poorly soon after. Also, when His Lordship tried to cut corners by castrating and disbudding at the same time, there was a lot of sniffing after. And some of that was when he trapped his fingers in the burdizzos. Not to mention the rich language and smell of burning flesh that followed when he tripped over the collie with the disbudding irons in his hand.

Yours Dr Ruth

Contractors / Services

Agricultural Electrician, J R Graham. Fault finding and repairs, breakdowns, new installations, lighting, security, 3-phase. Tel John on 07595 620935 or 01423 323436.

Fencing Contractors, A and S Corner, Easingwold. Call Andrew for a competitive quote: 01347 823645.

Cattle freeze-branding, North Yorkshire. Tel Steve Johnson 07940 064991 or 01347 810980.

For Sale & Wanted

FOR SALE IAE Cubicles. 1 year old complete with fittings & posts. Tel: 07971 776671 ask for Paul.

FOR SALE Big Bale Straw. Tel: 07971 776671 ask for Paul.

FOR SALE Pedigree Limousin Bulls. J Swales Tel: 07713 322245

FOR SALE Black & white bull calves reared to order. Please phone to discuss. Mr Sewell 07774 600049

FOR SALE Small bales of Seed Hay to sell contact William 07551 614916

FOR SALE Mini Heston Hay Bales Markington 07866 813701

FOR SALE Mueller 7000 Litre DX Tank for sale. Good working order. East Rounton. Tel: 01609882312

FOR SALE Good sheep hay. 4ft round and 6ft Heston bales available. Co. Durham Tel: 07738320263

W E Jameson & Son Ltd, Foxholme Lane Mill, Masham, N Yorkshire HG4 4EL
Tel: 01765 689666 • Fax: 01765 689662 www.wejameson.co.uk

